

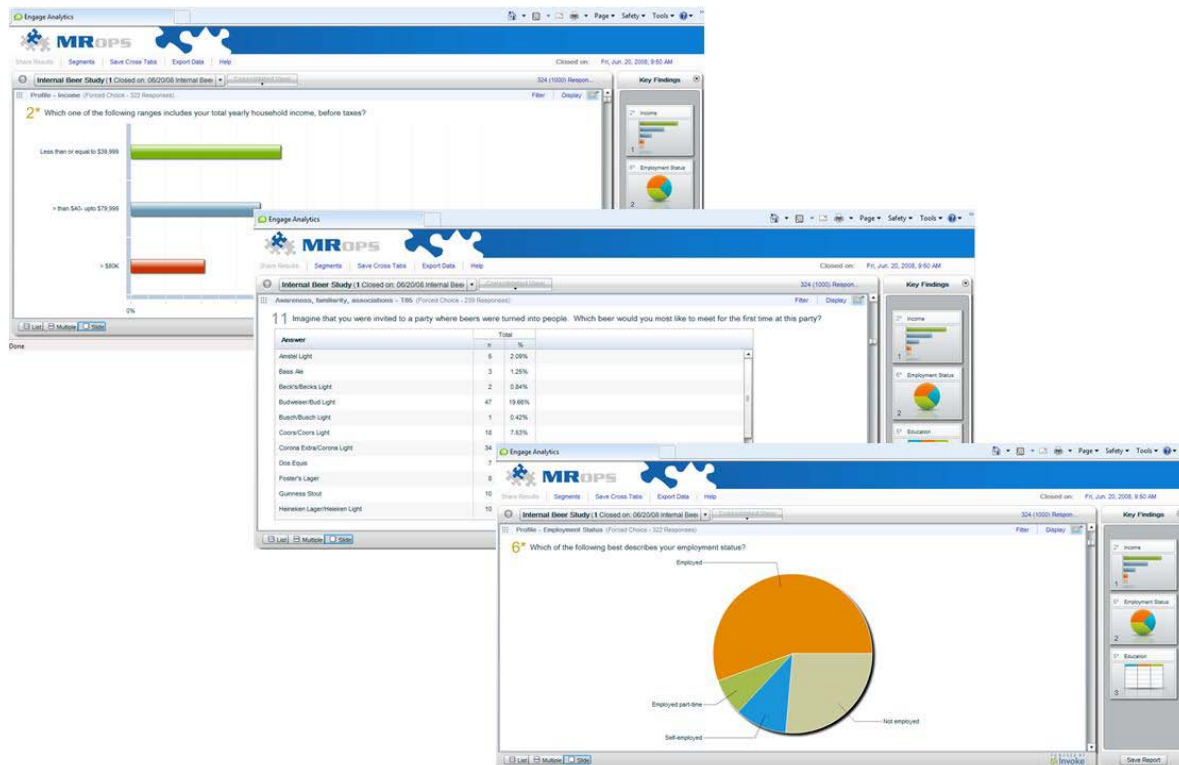
INTRODUCING ENGAGE ANALYTICS

MRops puts you ahead of the curve with our new real-time reporting and analytics solution.

Engage Analytics uses real-time, interactive dashboards to let you:

- View and interact with **real-time data** while in the field.
- **Rapid generation** of banners, cross tabs and charts.
- Create simple and **complex filters** with ease – no more back and forth with the DP team.
- Develop and easily share early **Key Finding Reports** with your team and client.
- Constant access to all previous projects – easy access for historical reference.

The Engage Analytics tool seamlessly connects to our data collection platform, eliminating the amount of time and money you spend on data management and reporting. It gives you the functionality and power to spend more time analyzing your own data and less time processing it.



Engage Analytics has a user-friendly interface to develop charts and tables for all levels of ability.

- Makes it easy to **compare evaluations** of different concepts.
- Provides seamless **integration with Excel and PowerPoint**.
- **Reduces turnaround time** and saves money.
- Ability to adapt the front end look and feel to your company's standards.

To arrange a demo, please contact Ian Kiernan – ian.kiernan@mrops.com 267-895-9480, Ext. 703